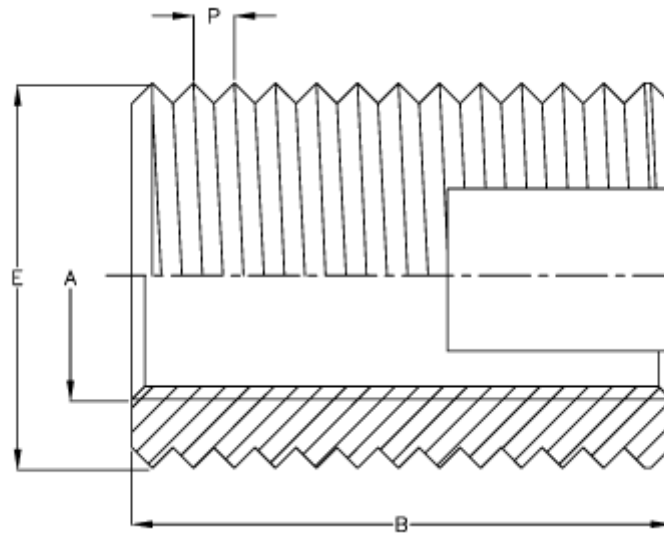


Article number: 12303000060110
Description: KLEE-coil 303 000 060.110
M6 Hardened/zinc-plated blue

Measures



Female thread A	= M6
Length B	= 10
Male thread E	= 8.0
Min hole depth blind hole	= 13
Recommended bore diameter (hard mat.)	= 7.3 to 7.5
Recommended bore diameter (soft mat.)	= 7.1 to 7.2
Thread pitch P	= 1.00
Type	= 303 0 060..